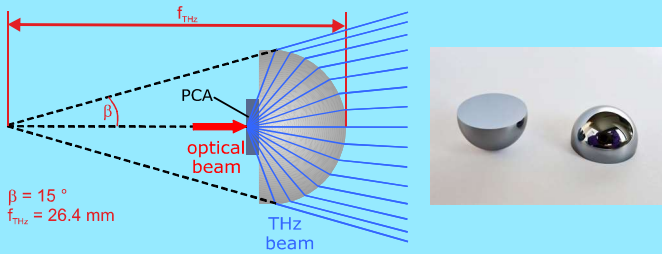


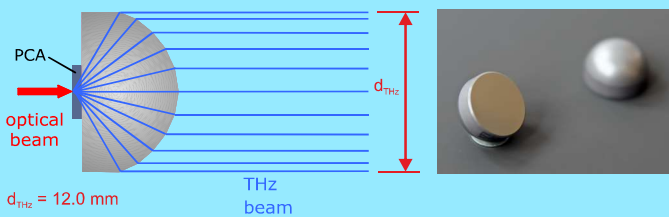
# Terahertz Antenna Mounting Options

## Silicon Substrate Lens Options

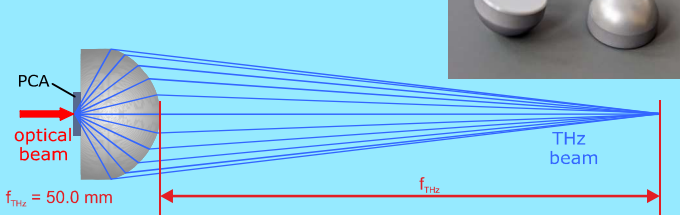
- Hyperhemispherical Silicon Lens



- Collimating Aspheric Silicon Lens



- Aspheric Focusing Silicon Lens



## Optical Options

### Aspheric Focusing Optical Lens

- for free space laser excitation



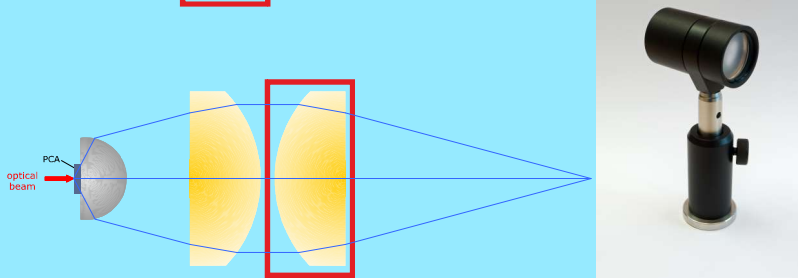
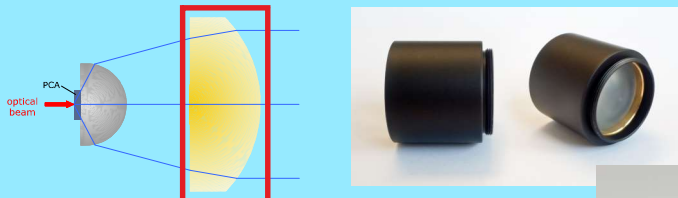
### Fiber Coupled Antenna

- FC/PC or FC/APC connector
- BNC or SMA electrical connector
- PM fiber available



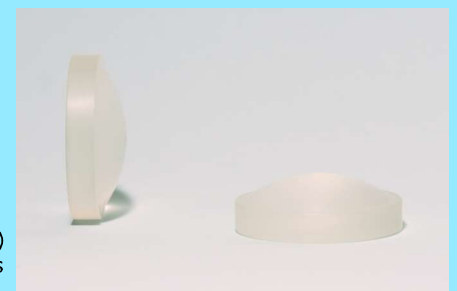
## TPX Lenses for Terahertz Beam Shaping

- Simple use with BATOPs photoconductive antennas
- Less diffraction effects than aspheric silicon lenses => larger distances
- Larger aperture => smaller focus diameter
- Highly transparent in THz range => low loss
- Transparent in visible optical range (VIS)



## Aspheric Focusing Plano-Convex TPX Lenses

- Diameter: 1" and 2"
- Focal length: 10 mm - 150 mm



25.4 mm (1") diameter lens



50.8 mm (2") diameter lens