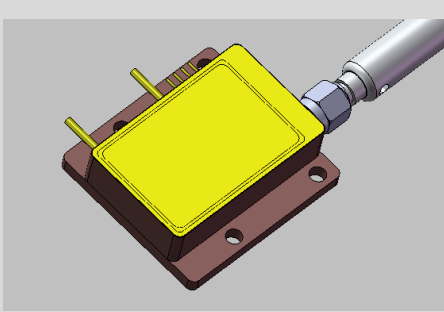


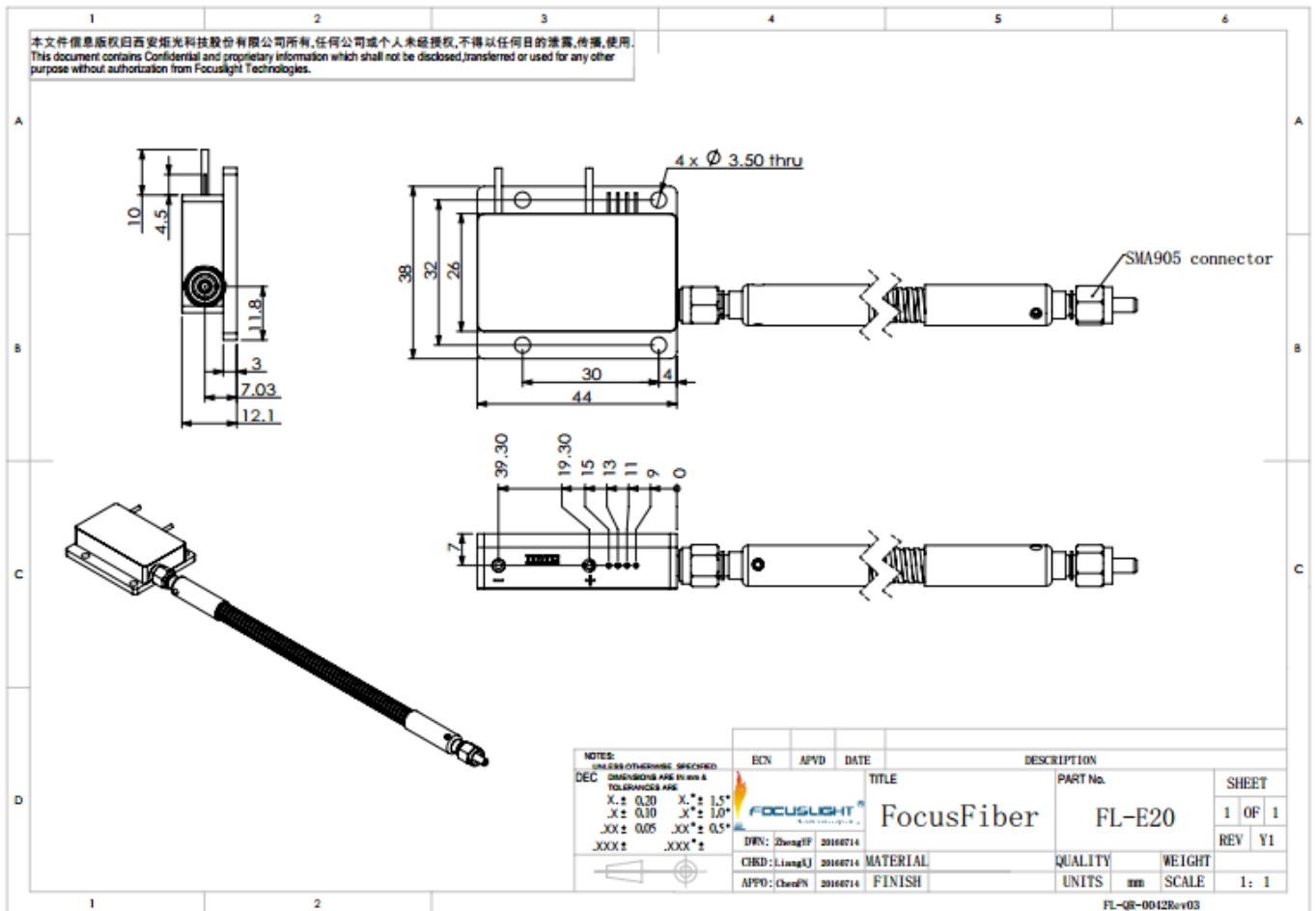
FocusFiber®

Fiber Coupled Multiple Single Emitter



Features

- Wavelength stabilization
- Compact housing
- High e/o efficiency



Specification

Module Type ¹	Units	FL-E20-981-200-0.22-A	FL-E20-981-200-0.22-B	FL-E15-981-200-0.22	FL-E15-976-200-0.22	FL-E7.5-981-200-0.22	
Optical ^{3,7}							
Center Wavelength λ	nm	981	981	981	976	981	
Wavelength Tolerance	nm	± 1	± 1	± 1	± 1	± 0.6	
Output Power ²	W	20	20	15	15	7.5	
Spectral Width FWHM	nm	1	1	1	1	1	
Wavelength Temperature drift	nm/°C	0.01	0.01	0.01	0.01	0.01	
Spectral Efficiency	%	>99% @ 20W @ 25°C	>90% @ 20W @ 28°C	>90% @ 15W @ 25°C	>99% @ 15W @ 25°C	>99% @ 7.5W @ 25°C	
Extra Measurement Spectral Efficiency	%	>99% @ 15W @ 20-30°C				>99% @ 15W @ 20-30°C	
Polarization							>95% in p-pol.
Lifetime							>20.000h
Fiber Parameters							
Fiber Numerical Aperture	NA	0.22	0.22	0.22	0.22	0.22	
Fiber Core Diameter	μm	200	200	200	200	200	
Connector Type	-	SMA905	SMA905	SMA905	SMA905	SMA905	
Fiber Length	m	Selectable	0.052	0.052	Selectable	0.052	
Fiber alignment							<1% power loss in p-pol
Electrical Parameters							
Max.operation current start of life	A	9	9	8	8	6	
Max.operation current end of life	A	10.8	10.8	9.6	9.6	7.2	
Typical threshold current	A	0.7	0.7	0.7	0.7	0.7	
Typical operation voltage	V	6	6	4	4	2	
Typical slope	W/A	2.3	2.3	2.3	2.3	2.3	
Typical O/E efficiency	%	36	36	36	36	36	
Power stability, RMS	%						<1(over 100h in p-pol)

Module Type ¹	Units	FL-E20-981-200-0.22-A	FL-E20-981-200-0.22-B	FL-E15-981-200-0.22	FL-E15-976-200-0.22	FL-E7.5-981-200-0.22
Thermal Operation Conditions						
Nominal diode heat sink temperature	°C	25	25	25	25	25
Diode heat sink operation temperature	°C	15-30	15-30	15-30	15-30	15-30
Minimum heat sink capacity	W	65	65	50	50	25
Package						
Dimensions	mm ³	44*38*12.1	44*38*12.1	44*38*12.1	44*38*12.1	44*38*12.1
Storage temperature	°C	-20~80	-20~80	-20~60	-20~60	-20~60
Compliant						RoHS2002/95/EC and CE compliant
Additional Feature-PD						
Operation Voltage	V	9	Selectable	Selectable	9	Selectable
Output signal (min)	mA	0	Selectable	Selectable	0	Selectable
Output signal (max)	mA	6	Selectable	Selectable	6	Selectable
Additional Feature - Reflection Protection						
Wavelength reflection bandwidth	nm	1040...1100	Selectable	Selectable	1040...1100	Selectable
Reflection Ratio	%	≥99.0	Selectable	Selectable	≥99.0	Selectable
Other Features						
Temperature sensor		NTC&PT100	NTC&PT100	NTC&PT100	NTC&PT100	Selectable

¹Explanation for the name of Module Type: FL(abbreviation of Focuslight) –FCMSEX(structure code) -20/15/7.5(output power) -9xx(center wavelength).

²Reduced lifetime if used above nominal operating conditions.

³Data at 25°C temperature, unless otherwise stated.

⁴A non-condensing environment is required for storage and operation below ambient dew point.

⁵Fiber length can be specified by customer.

⁶Can be with or without fiber connector.

⁷If there are any other requirements, please contact us.

⁸Temperature sensor is not inside the module, we leave one hole for assembling temperature sensor, more details please see the Device Dimension drawing, so here the type of temperature is ours recommendation .

Use a custom fiber (LIMO-SMA905-F200-0.052-FEX134),Sticker with the item number of the customer on the housing

**Focuslight Technologies Inc.**

Add: 56 Zhangba 6th Road, High-Tech Zone
Xi'an, Shaanxi 710077, P. R. China

Tel: +86 29 8956 0050

Fax: +86 29 8177 5810

Email: sales@focuslight.com.cn

Website: www.focuslight.com.cn

Copyright ©2015 Focuslight. All rights reserved.

