

User Manual

HUXSCOPE-WiFi™

Fiber Optic Microscope / Inspector



INTRODUCE

HUXSCOPE-WiFi™ is communicated with Apple iOS and Android Smartphone (WiFi) as well as PC/Laptop (USB) and it is very usefully device to inspect fiber optic ferrule in field. HUXScope-WiFi has Pass/Fail Analysis Software and it is no need exterior Wireless AP or Module.

AVAIABLE APPLICATIONS

- Fiber Optic System / Sub-system with Fiber Networks
- Fiber Optic Module included Transceivers, SFP, etc.
- Test Equipment and Distribution Patch Panels
- Fiber Optic Components like Attenuators, Inside Adaptors

STANDARD PACKAGE

- a. Handset (included WiFi)
- b. AC Battery Charger incl. USB to mini 5-pin cable
- b. Software (Pass/Fail Analysis)
- c. Tip for female SC/PC and FC/PC
- d. Tip for female LC/PC
- e. Manual

[Female Tip is to inspect ferrule inside of adaptor and Male Tip is to inspect patchcord ferrule.]

WARRANTY

HUXSCOPE you bought is passed our all inspection and then is shipped to our customer. TheFibers give you a warranty for one year from the buying date. During the warranty period, for the returned product by freight prepaid from the customer, TheFibers will provide repair and replacement for any defective product without additional charge which is needed to repair or replacement.

However the followings are NOT COVERED under warranty:

- In case the serial and warranty sticker is removed
- Failure to use products under abnormal operating conditions
- Any loss, damage by user fault
- Any damage by disassembly without permission

KEY FEATURES

- WiFi and USB connection to Smartphone and PC
- Android App and iOS (Apple) App both
- Pass/Fail Analysis to IEC 61300-3-35
- Available several connector & adaptor types Tips (Both Female / Male Tip)
- External Interface : mini 5-pin type
- Save inspected images and reports
- Real-time report in field through smartphone
- Built-in rechargeable battery
- No need exterior Wireless AP or Module

HARDWARE SPECIFICATIONS

Brand Name	HUXScope-WiFi	
Magnification	260X - 400X	
Field of Vision	400um x 300um	
Focus	Manual, Maximum 2mm in and out	
WiFi	2.4GHz WiFi IEEE 802.11b/g/n	
Power	110/220V@50/60Hz Charger or USB Cable with PC	
Battery	3.7V 1300mA Rechargeable Lithium Polymer Battery	
Battery Running Time	Approx. 4 hours (continuous usage)	
USB Cable	mini 5-pin to USB 2.0 for Windows XP, WIN7/8/10	
Software	For PC	Pass/Fail Analysis to IEC 61300-3-35
	For Smartphone	Android App and iOS (Apple) App
Dimension	Handset (without Tip)	185mm (L) x 24mm (T)
	Weight	170g

PRODUCT EXTERIOR OVERVIEW



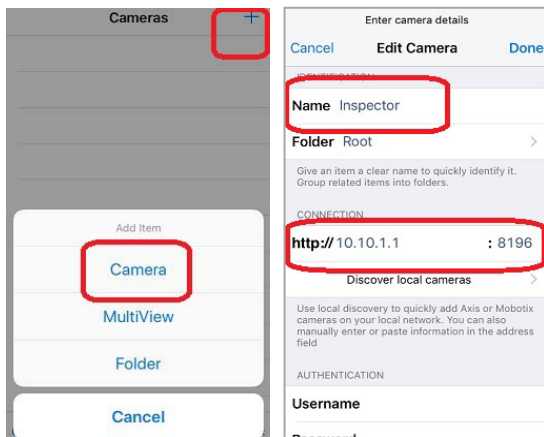
WiFi OPERATION

Handset includes rechargeable battery and the running time of this battery (if full) is approx. 4 hours (continuous usage). Therefore please SW OFF always when you don't inspect. The Charging LED show RED when the battery is charging and this RED LED will be OFF when the battery is full charged or un-charged. You can see the below how to charge more detail.

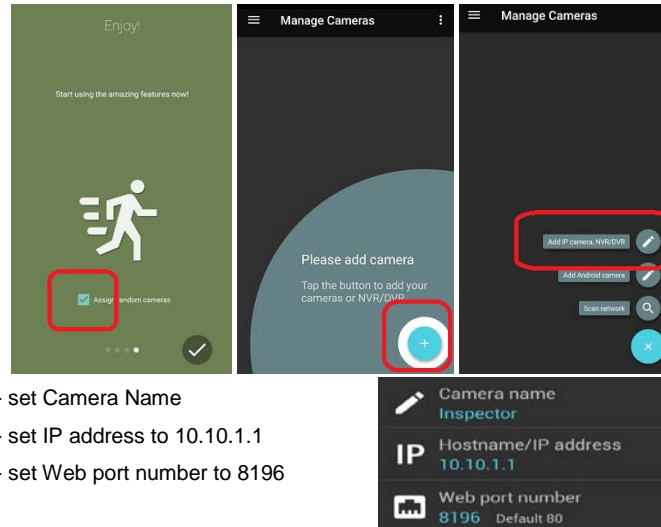
- Download and install **Net Cam Viewer** at App Store (iPhone) and **tinyCam FREE** at Google Play Store (Android Smartphone).
- Handset S/W OFF
- Handset S/W WiFi and then S/W ON. Waits for a seconds and then the WiFi LED is blinking with GREEN color.
- Smartphone Wi-Fi ON and connect to TheFibers AP. (Password is Serial No + number 0. For example: sn000010)



- Open iOS iPhone Net Cam Viewer App and set like below.
 - click right upper + icon and click Camera and then set Name and set http to 10.10.1.1 : 8196 and set Camera Type to ABS and click Done and then click your Camera



- Open Android Smartphone tinyCam FREE App and set like below.
 - check-off random cameras and click + icon and click add IP camera

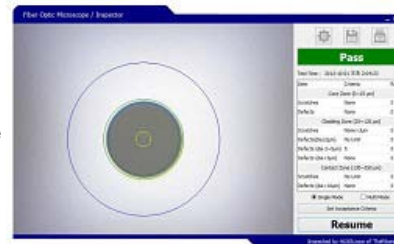


- set Camera Name
- set IP address to 10.10.1.1
- set Web port number to 8196

- Insert the tip into adaptor or female side of fiber optic devices. You can feel reaching edge of the adaptor. To get clear images, you have to rotate 360° FOCUS.
- Change Tip : The handset basically was assembled by SC/FC/PC Female Tip. If you want to change Tip to others, it could be changed by screw easily. Please keep clean lens in Handset when removing and changing the Tip. The lens is important to get clean images. So we recommend you should be careful.

USB OPERATION

- Download and install the supplied software to your PC.
- Connect Handset to PC by USB to mini 5-pin cable and move S/W USB and then S/W ON.
- Click the software icon.



[If your software don't work yet, you have to change the name of Imaging Device.]

- Check button: To analysis Pass/Fail and Resume to return.
- Select Single Mode or Multi Mode button.
- Set Acceptance Criteria
- Parameter Setting button: To control Video Process and Camera Control (Setting 1, Setting 2)
- Change Core/Clad Threshold (recommend 70~90) according to your PC condition.
- Save & Print button: After click Check button, you can save (or print) the analysis report by bmp or jpg file. After click Resume button, you can capture (or print) the inspected image only automatically like Capture_0001, Capture_0002....

Charging Battery

- Connect AC Battery Charger to Handset and the required electric power is 110/220V@50/60Hz. The full charging time takes about 3 hours. When charging, the S/W position is no problem at ON or OFF but OFF is more faster.
- Connect Handset to PC by USB to mini 5-pin cable and then the battery will be recharged but slowly. During use it with USB operation, if the Battery is full, the charging process is stopped automatically.
- The Battery Life Time is about 500 cycles. Unless you use full battery every day or unless it is charged by un-recommended Charger, no need battery replacement for long time. To replace the Battery, the Handset should be sent to TheFibers A/S Center only and the replacement takes just 1 day.

TheFibers A/S Center
 A-1109 Keumkang Penterium IT Tower
 282 Hagui-ro, Anyang-City, Korea
 Tel: +82-31-381-6108
www.thefibers.com