

# Getting Results

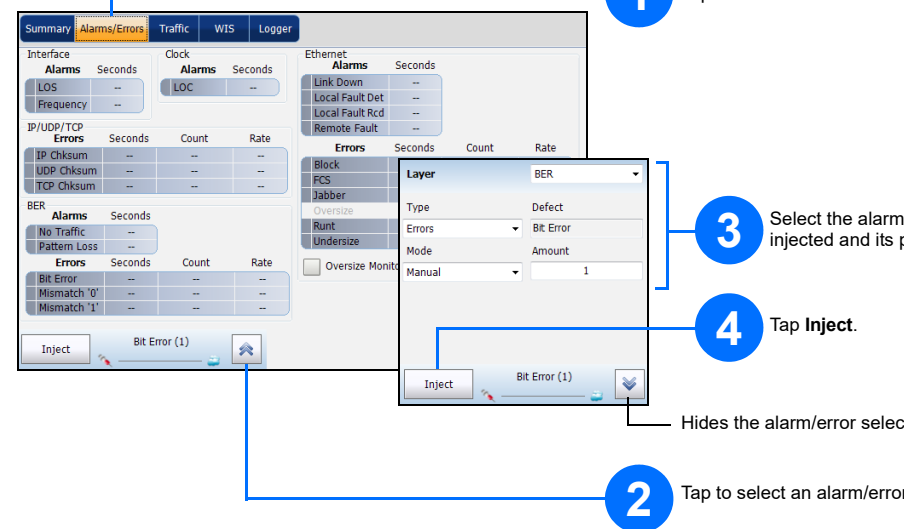


The **Summary** tab is automatically displayed once the test is started. Select a tab to get additional test results.

The **Stop** button is displayed when the test is running.

Test control buttons are reconfigured according to the test application and status.

# Alarm/Error Injection



1 Tap the **Alarms/Errors** tab.

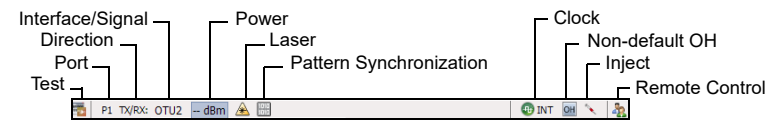
2 Tap to select an alarm/error.

3 Select the alarm/error to be injected and its parameters.

4 Tap **Inject**.

Hides the alarm/error selection.

# Status Bar



Additional Status Bar Symbols:

	Connection between two testing units (Dual Test Set or Loop Up)
	Loopback Tool

# Global Indicator

The global indicator displays the pass/fail verdict, global alarm, timer, and/or test duration.



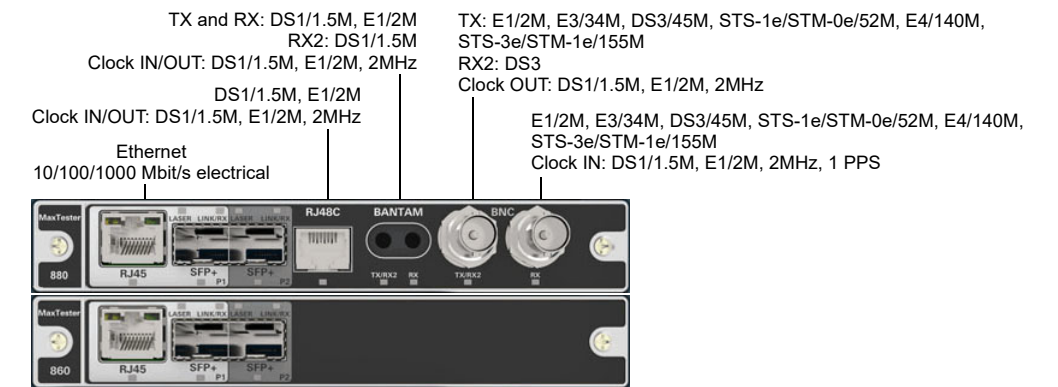
Tap anywhere within the global indicator area to view the maximized view of these indicators.

# Test Control Buttons

	<b>Start Stop TX</b>	Starts test. Available when the test is not running. Stops test. Available when the test is running. Enables traffic generation and starts test. Available with Traffic Gen & Mon.
	<b>Save Load</b>	Saves, loads, imports, exports, and deletes configuration file(s). Available when the test is not running.
	<b>Report</b>	Saves, opens, imports, exports, and deletes test report(s). Available when the test is running or stopped, but the report generation (save) is only possible when the test is stopped.
	<b>Laser (on)</b>	Indicates that the laser control is on (for at least one lane for parallel interface); the laser button has a red border. Tapping this button will turn off the laser (for all lanes for parallel interface). Only available with optical ports.
	<b>Laser (off)</b>	Indicates that the laser control is off (for all lanes for parallel interface). Tapping this button will activate the laser immediately by emitting an optical laser signal (on all lanes for parallel interface). Only available with optical ports.
	<b>Reset</b>	Clears results, statistics, and logger content. Available when the test is running.
	<b>Inject</b>	Injects alarms/errors based on settings from the Inject button from the Results - Alarms/Errors tab.
	<b>Discover Remote</b>	Discovers and connects to a remote module that loops back the traffic via Smart Loopback or Dual Test Set (DTS).
	<b>Lpbk Tool</b>	Loops back the Ethernet frames/packets that are received on the port unused by the main test application.

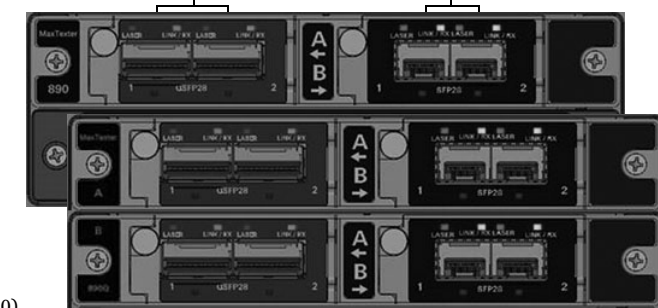
# Physical Interfaces

Connect the signal to the corresponding interface on the module. For optical interfaces, make sure to insert the proper transceiver and carefully connect optical fiber cables to the transceiver IN (RX) and OUT (TX) ports.



Ethernet 100 Mbit/s, 1000 Mbit/s, 10 Gbit/s<sup>1</sup> LAN/WAN optical  
 Ethernet 10/100/1000 Mbit/s electrical (using active copper SFP)<sup>2</sup>  
 MAX-880/890/890Q: OC-1/STM-0, OC-3/STM-1, OC-12/STM-4, OC-48/STM-16, OC-192/STM-64  
 MAX-880/890/890Q: OTU1, OTU2

Ethernet 100 Gbit/s  
OTU4



1. Not available on MAX-860.
2. Only available on P2 (MAX-860/860G/880).

# Starting the Application

From Mini ToolBox, tap the application button. For MAX-890Q there is an application for each part of the unit: A and B.



For more information, refer to the user guide.



# Selecting, Configuring, and Starting a Test

